

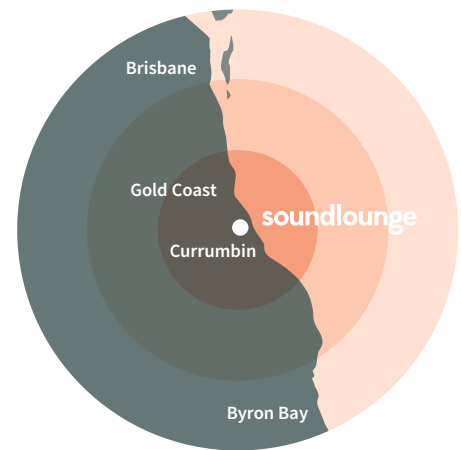
soundlounge

Venue Pack

Located in Currumbin on the **Gold Coast, Queensland**, Soundlounge can be configured for **300, 550 or 700 guests**.

Live music for over 10 years.

Soundlounge offers modern production, excellent room acoustics, plus numerous capacity and seating options to create the best original live music venue on the Gold Coast.



All about the music

We've had a diverse collection of popular Australian and international artists entertain our audiences since Soundlounge's first opening in 2004, with past performers including Sarah Blasko, Angus & Julia Stone, Passenger, Violent Soho, Boy & Bear, Eric Bibb, Emma Louise, Kate Miller-Heidke, J Mascis, and hundreds more.

Our mantra

Our purpose is to advocate original music, embracing all genres and artistic styles. At Soundlounge, we believe in supporting the live music scene locally, nationally and internationally, and endeavour to be the premier music venue on the Gold Coast.

Where we are

Soundlounge is located upstairs at the Currumbin RSL on the Gold Coast, just 6km from the Gold Coast Airport, 2 minutes off the M1. Ideally situated between Brisbane and Byron, each only an hour's drive away, Soundlounge is a perfect destination as part of any national tour run.

Win 'Best Live Music Venue Gold Coast' Gold Coast Music Awards



Promotion

Soundlounge promotions are direct and effective, resulting in high awareness to a loyal clientele base that make up our social network and mailing list.

Our promotional efforts include:

- Weekly SoundLounge specific emails sent to over 5000 subscribers
- Included in club's monthly emails to over 15,000 subscribers
- 150 street posters circulated throughout the city. Full page ad in monthly Blank GC street press of artists for the upcoming month
- A large and ever-growing following on Facebook and Twitter
- On site digital signage at the club
- Main road LED signage advertising upcoming shows
- Facebook competitions and advertising
- Listings in all major gig guides
- Program section included in bi-monthly club newsletter reaching 3,000 people plus displayed in over 20 southern Gold Coast accommodation houses
- Press releases sent to over 150 local media partners including The Music, Blank Magazine, Gold Coast Bulletin, Tweed Daily News, Byron Echo, Gold Coast Sun, ABC Coast FM and more.

Capacity

Soundlounge's new room provides a flexible space that can accommodate 300, 550 or 700 guests, depending on room configuration.

A backstage area and change room is provided for artists, as well as Venue Manager, door and merch staff, professional front of house, and foldback engineers.

Ticketing

Tickets are sold online exclusively via Soundlounge's website, keeping booking fees to a minimum. Tickets are also available for purchase at the door if not sold out. Agents are provided a login to check ticket sales, worksheet details and financial reports for any artists they have booked with us, past or present.

Bookings

If you have questions regarding venue fees, or wish to enquire about anything, please feel free to contact :

Agency enquires

Brad Inglis
0422 615 810
brad@soundlounge.com.au

Venue enquires

Currumbin RSL
+61 7 5534 0970
functions@currumbinrsl.com.au

Follow us

We are a social bunch, follow us at:

 [facebook.com/soundlounge.com.au](https://www.facebook.com/soundlounge.com.au)

 twitter.com/thesoundlounge

Production specification

The following equipment is provided by Soundlounge.

1 x Qualified Sound Engineer

1 x Qualified Fold back operator

F.O.H Sound Reinforcement

- 2x Turbosound TDX252 Speakers 1000 Watts Ea
- 2x Yamaha SW215V Club Series V Dual 15" Subwoofer 1000 watt's EA
- 2x Yamaha CW218V Dual 18" Club Concert Series Subwoofer 1200 Watts Ea

Amplifiers & Crossovers

- 2x Quest QA3004 two channel Power Amps 1,100W Per Channel
- Yamaha P7000S two channel power amp, 1,100W per channel
- 2x Behringer Europower EP4000 2 channel Power Amp 1,400W per channel
- 2000 watt per channel, four channel Seer Audio amplifier
- 1x DBX 223XL Stereo 2-Way/ Mono 3-Way Crossover
- DBX Driverack PX

F.O.H Delay stack consisting of

- 2x Yamaha S215V Club Series V Speaker 1000 Watts Ea
- 2x Samson 1000W 18" powered subs

Foldback Sound Reinforcement

- 2 X 800 watt JBL STX815M (15" & 1" Horn)
- 4 X 400 watt bi-amped Yamaha bins, which can also be used as side fill
- 2 X 250 watt JBL Eons (15" & Horn self-powered)
- 1 X 350 watt Turbosound TQ-310 (10" & Horn)
- Drum Fill - Samson 1000W 18" powered sub with JBL Eon mid/high

F.O.H Console

- 1 X Digico D1 Mixing Console (with 32 in/8 out Digirack, ref mic & Audio Tools)
- 2 X Klark Teknik 31 Band Graphic EQ
- 1 x TC Electronics D-Two outboard effects unit
- 1 x TC Electronics M-One outboard effects unit
- 1 X Yamaha SPX 990 outboard effects unit
- 1 X Lexicon PCM70 Outboard effects unit
- 2 x DBX 266XL Two Channel Compressor/Gate

Foldback Rack

- 1 X Yamaha LS9 32 Mixing Console (with wireless router & IPad remote)
- 6 X 31 Band Yamaha Graphic Equalisers

Microphones

- 8 X Shure SM57s
- 3 x Shure Beta 98 with drum mounts
- 2 X Senheisser 855s
- 6 X Shure SM58s
- 2 x Shure Beta 58s
- 1 X Shure SM87
- 1 X Shure Beta-52 (Kick Drum Mic)
- 1 x Rode NT4 Stereo condenser (OH) • 1 X AKG C430 Condenser
- 2 X Audio Technica AT3035 condenser
- 1 X AKG C480
- 3 x EV 357s
- 3 x EV 257
- 1 x PZM
- 8 X DIs, including Radial JDI, ProD1. ProD2 & J48
- K&M Mic Stands

Lighting

- LMS 12 Channel Lighting Desk
- Jands WMX 12 Channel Dimmer rack
- 16 x Par 64 cans
- 16 x Par 56 cans
- Winch-up lighting trees
- 6m lighting truss
- 3 Phase power + 240v
- Stage - 3.6m x 4.8m
- 32 Channel Multicore with fold-back split

Optional Lighting

- Strand 818 follow spot available for \$50 delivered
- 4 x Coemar 150 moving lights with separate desk/controller available for \$50 delivered

In-house Back-line Hire

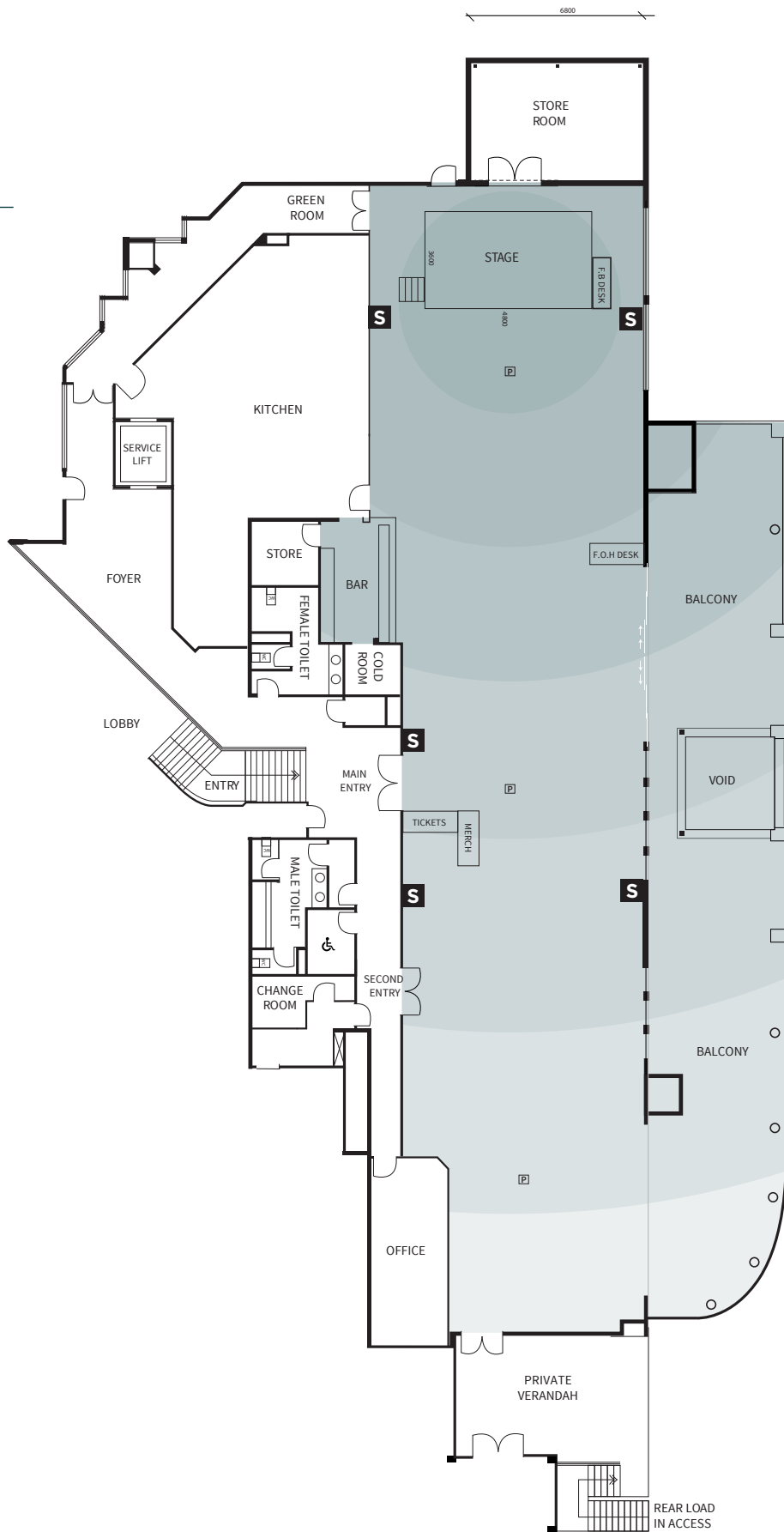
- Vox AC30 CC2 guitar amp, \$50
- Hartke HA4000 watt bass amp with two 4x10" 400 watt cabinets (400 watts/ 220 watts), \$100
- Vase Trendsetter 30 watt valve guitar amp with two Celestion Greenback speaker box \$30
- Pearl export drum kit with Zildjan cymbals \$150
- Above drum kit, bass amp & guitar amp/s, \$250
- Fender Stratocaster & Maton EM225C acoustic guitars, \$50 each

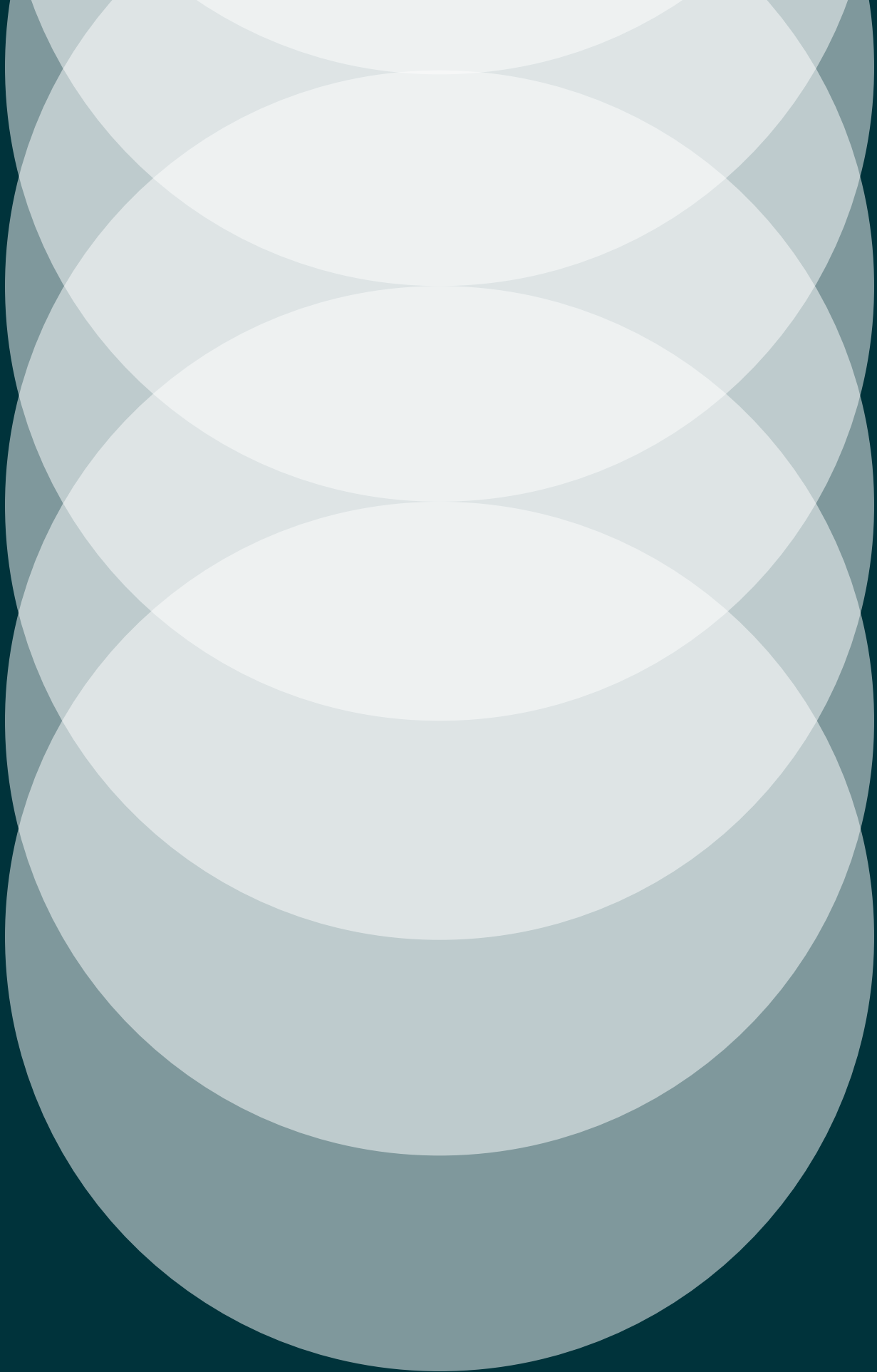
External Backline suppliers available on request.

Floorplan

Legend

- P Projectors
- ♿ Disabled Toilets
- S Speaker Stack





Thank you

If you would like more detailed information, please email rob@soundlounge.com.au